

Solvents			S
Spackle, glaze	T		
Spot remover(2)			S
Stain and varnish		R	S
Syringes (Store in rigid, puncture-resistant, leak-proof container; seal prior to disposal.)	T		
Swimming pool& hot tub chemicals(3)			S
Thermometer, mercury			S
Toilet bowl cleaner			F
Transmission fluid		R	
Weed killer			S
Windshield wiper fluid			F
Wood preservative			S

1 Solvent-containing products include the words “flammable,” “combustible” or “contain petroleum distillates” on the label.

2 Not all types of these products need to be saved for collection. Read labels carefully, and call your local official for disposal advice.

3 Never mix bleach and ammonia. Chlorine Gas may result.

4 Note: (Empty cans and/or dried paint without lead can go in the trash)

For a list of the Illinois EPA Household Hazardous Waste Collections please visit www.epa.state.il.us/land/hazardous-waste/household-haz-waste/hhwc-schedule.html



Macon County Recycling Guide 2010



Batteries, alkaline (low mercury)			S
Batteries, ni-cad or button	R		S
Bleach-based Cleaners(3)			F
Brake fluid	R	S	
Cellular Telephones	R		
Cosmetics	T		
Degreaser		S	
Depilatories			F
Diesel fuel		S	
Disinfectant			F
Drain cleaner(2)		S	
Fabric dye, concentrated		S	
Fertilizer, dry			
Fertilizer, with weed killer	T		
Fireworks (Soak in water until saturated, then place in trash.)	T		
Floor wax/stripper(2)		S	
Fluorescent tubes, bulbs & ballasts		R	
Furniture polish(2)		S	
Gasoline (Use a UL approved safety container, keep away from flame, spark and heat.)		S	
Glass cleaner			F
Hair permanent lotion			F
Herbicides		S	
Hobby chemicals		S	

Why Recycle`



Recycling is an important way for individuals and businesses to generate less waste and reduce the negative impact of that waste. Recycling supports a viable business sector in Illinois. Your recycling efforts contribute to a strong economy.

Recycling conserves energy and our natural resources, saves landfill space, as well as reduces water and air pollution. As environmental awareness increases, recycling increases in relevance.

The common montra Reduce, Reuse, Recycle combined with purchasing recycled products comprise a comprehensive waste and resource reduction strategy that benefits our natural world. For every 1,000 tons of recycled material 15 jobs are created as compared to less than one job created by land filling the material. (source: ILDCEO 2008)

The US Environmental Protection Agency estimates that 70% of the waste Americans produce could be recycled.

For your convenience, items requiring special attention are listed on the following pages with the corresponding locations for responsible recycling.

It is recommended to call the respective businesses and obtain their hours of operation and any specific requirements for recycling.

Curbside Recycling

Preparing Materials

Rinse containers and remove caps before placing in a recycling receptacle. Bundle newspapers and magazines with twine, (no plastic bags) to keep them from blowing in the wind. Check with your local hauler to determine specifics.



Store materials for special collections in a cool, dry, well ventilated area away from children and pets. Package leaking containers in a plastic lined cardboard box filled with an absorbent material before bringing to a special collection.



Macon County Curbside Recycling

The communities listed below have curbside recycling programs. For details on collection days and materials accepted call:

Argenta	824-3942
Decatur	424-2778
Forsyth	877-9445
Long Creek	864-5656
Macon	764-3643
Mt. Zion	864-5425
Oreana	468-2476
Warrensburg	672-3222

Drop off Recycling Program Supported by the Macon County Environmental Management Department

Recognizing the need for convenient recycling in communities and rural areas without curbside recycling, Macon County Environmental Management Department and respective Macon County Boards, support nine drop off sites in our County.

Items accepted include: steel and aluminum cans, catalogs, cereal boxes, junk mail (shred mail for your safety), magazines, newspapers, office paper, phone books, plastics #1 - #7 (please flatten bottles) and paperback books.



Macon County Environmental Management Department

T- Trash you are able to put it out with your household waste.

R- Recycle

S- Save for a household hazardous waste collection day.

F- Flush down your drain **ONLY** if you are connected to a municipal sewer system.

None of this information applies to businesses or individuals for profit including professional hobbyist. All Comprehensive Environmental Response, Compensation, and Liability Act (CERCLA) rules apply.

For more information please call Macon County Environmental Management at 425-4505

Adhesive and glue, water-based	T		
Adhesive and glue, solvent-based(1) (Should be placed in trash with lid off, only if hardened.)		S	
Aerosol Paints		S	
After-shave/perfume			F
Ammonia-based Cleaners(3)			F
Ammunition (Contact law enforcement for proper disposal in your area.)		R	S
Antifreeze		R	S
Artist and hobby paint(4)		R	S
Auto battery			

The illegal dumping of garbage is a risk to health and environment. If you see someone dumping garbage, please call the Macon County Environmental Management Department at 425-0291.

Drop off Recycling Trailer Locations:

Austin Township

2402 Lincoln Memorial Parkway, in front of the Township Hall

Blue Mound Township

5758 Railroad St., next to Township Hall in front of Township garage

City of Maroa

120 South Locus, in front of City Hall near the Police Department entrance (old Maroa Grade School)

Long Creek Township

Highway Department, next to water tower, off Route 36 turn onto 70th Street

Oakley Township

2221 Sangamon Street, in front of the Township garage, follow signs to Township Hall

South Wheatland Township (Elwin)

3987 West Elwin Road, next to the Township garage, West of Business 51

Village of Blue Mound

229 Railroad Avenue in the Village at the corner of Railroad Avenue and Highway 51

Village of Harristown

185 North Kembark, next to the Village office

Village of Niantic

2402 Lincoln Memorial Parkway, in front of Township hall

Aluminum Cans

Aluminum is made from bauxite ore. Eighty percent of the world's bauxite production is from strip mining which causes the destruction of forests and contaminates rivers and streams.

Recycling aluminum also saves energy, requiring 1/10 of the energy as compared to using raw materials.



All curbside programs

Recycling trailer program

Dove RSVP Recycling Center

130 W. Cerro Gordo 422-3977

Midwest Fiber Co.

1902 N. Water Street 424-9460

Sol Tick & Co.

1180 N. 22nd Street 429-4148

Suburban Disposal

390 W. North Warrensburg 672-8483

U.S. Scrap

1551 E. McBride Av. 233-0090

Antifreeze

(see Household Hazardous Waste)

Appliances

(see white goods)

Automobiles

Automobiles are the most recycled manufactured product. Each year, the steel industry recycles more than 14 million tons of steel from end-of-life vehicles. This is equivalent to nearly 13.5 million automobiles. When comparing the amount of steel recycled from automobiles each year to the amount of steel used to produce new automobiles that same year, automobiles maintain a recycling rate of nearly 100 percent. (Source: Steel Recycling Institute, 2007)

Steel scrap is derived not only from automobiles but also from steel cans, appliances and construction material.

Website Sources for Additional Information

The inclusion of links from this site does not imply endorsement by the City of Decatur nor Macon County. The City and County makes no endorsement, express or implied, of any links to or from its site, nor is it responsible for the content or activities of any linked sites. Any questions should be directed to the administrator(s) of this or any other specific sites.

Agricultural Watershed Institute

<http://www.agwatershed.org/>

Composting 101

<http://composting101.com/>

Decatur, City of

<http://www.ci.decatur.il.us/>

Earth 911

<http://earth911.com/>

Freecycle

<http://www.freecycle.org/>

Illinois Environmental Protection Agency

<http://www.epa.state.il.us/>

Macon County Environmental Management Department

<http://www.maconcounty-il.gov/environmental-management-department/>

Mother Earth News

<http://www.motherearthnews.com/>

Sustainable Decatur

<http://www.facebook.com/pages/Sustainable-Decatur/111708972193558?ref=search&sid=1901188.1732588204..1>

University of Illinois Extension Master Gardener Program

<http://web.extension.illinois.edu/mg/>

Victory Gardens

<http://www.revivevictorygarden.org/>

WalMart United Way Cell Phone Recycling

households flushed waste pharmaceuticals down the toilet or poured them down the drain. However, wastewater treatment plants and septic systems are generally not designed to treat pharmaceutical waste. Residents are advised to save old or unwanted medications for an Illinois EPA sponsored household hazardous waste collection.

Handling/Disposal Options for Households

1. Reduce pharmaceutical waste whenever possible:
 - Use medicines as prescribed by your doctor.
 - Purchase only what is necessary.
 - When your doctor prescribes a new medication, ask the doctor to prescribe only enough to see if the medication will work for you and in the lowest dose advisable. Follow the same procedure with your veterinary prescriptions.

2. Dispose of the remainder properly.
 - Dispose of your unused pharmaceuticals in the trash, especially when there is a risk of accidental poisoning, overdose or diversion. When placing unused pharmaceuticals in the trash, be sure to do the following:
 - remove or mark over all labels that identify the materials as pharmaceuticals or that could provide personal information about you, including prescription information that someone could try to refill.
 - render them unattractive by dissolving them in a small amount of water or alcohol, or by grinding them up and mixing them with coffee grounds or kitty litter.
 - put them in a second container or small plastic bag and hide them in your trash.

Never burn pharmaceuticals or personal care products in a burn barrel. Uncontrolled burning can create dioxins and other air pollutants.

American Lung Association Vehicle Donation Program	www.giveacar.org	1-800-583-4425
America's Car Donation Charities Center	www.donateacar.com	1-800-237-4714
Salvation Army	http://www.thesalvationarmycardonationprogram.org/	
Sol Tick & Co.		429-4148
U.S. Scrap		233-0090

Batteries / Automotive

Advance Auto Parts	1112 E. Eldorado	423-9181
Auto Zone	3050 Brett Ave	876-8317
	1434 E. Eldorado	362-0222
	1215 N. University Ave.	425-2908
Billingsley Amoco	1725 S. Franklin	428-5421
Rexx Battery	1330 E. Eldorado	422-0281
Midwest Fiber Co.	1902 N. Water Street	424-9460
NAPA Auto Parts	3010 N. Woodford	877-7456
O'Reilly Auto Parts	1938 E. Eldorado	428-1340
	2315 N. Oakland	875-2973

Batteries / Household

Over three billion dry cell batteries are sold each year in the U.S. Batteries disposed have the potential to contribute heavy metal and other toxic substances into the air and water.



Rechargeable batteries can be charged hundreds of times without losing the ability to hold a charge, while single-use batteries are "one and done." Rechargeable batteries are more cost effective over time.

Kenny's Ace Hardware	200 Spitler Park Dr.	864-9214
----------------------	----------------------	----------

Macon County Environmental Management	425-4505
141 S. Main, Room 408	
Maroa Lumber Company	794-2226
229 E. Main St., Maroa	
Radio Shack*	875-7334
4202 W. Prospect	
Staples	875-9951
900 Commerce Pl, Forsyth	

*household rechargeable only (will accept NiCad, NiMh and LiIon)

Books

Area Libraries	
Recycling trailer program*	
Catholic Charities	428-3458
247 W. Prairie Ave.	
Friends of the Library (Decatur Library)	414-2900
130 N. Franklin St.	
Old Book Barn (offers credit)	875-0222
126 S. State Route 51	
Salvation Army	428-4513
1447 W. King	429-8050
229 W. Main	



* Soft Cover Only



Also check for literacy and after school programs in your area.

Building Materials (construction & demolition)

Construction and demolition (C&D) waste comprises 23% to 33% of municipal solid waste sent to landfills. Many of these materials can be reused or recycled, thus prolonging our supply of natural resources and potentially reducing costs.



Common C&D materials include lumber, drywall, metals, masonry (brick, concrete, etc.), carpet, plastic, pipe, cardboard, or green waste related to land development. Of these, metals are the most commonly recycled

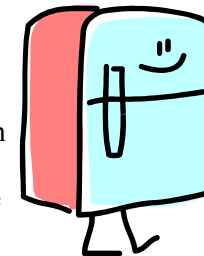
methane gases, causing them to become buoyant, or 'bubble' to the surface. This 'bubbling' effect can damage landfill liners that have been installed to help keep landfill contaminants from polluting local surface and ground water.

290 million tires are used every year, 55 million are illegally dumped. Used tires are breeding grounds for mosquitoes and rodents. Illegally burning tires releases toxic fumes of into the air.

Call your local tire dealer (fee may apply).

White Goods (appliances)

Refrigerators, stoves, air conditioners and washers, contain toxins that contaminate water and soil if not properly disposed. When purchasing a new appliance, ask the store if they will recycle your old unit. If not, hire a legitimate recycler or waste hauler. If the appliance works, donate it to charity or see if someone in the local community could put it to good use.



Dick Van Dyke	423-7424*
134 North MLK Jr.	
Sol Tick & Co.	429-4148**
U.S. Scrap	233-0090**

* A free may apply

** Freon must be removed by licensed individual

Disposal of Unwanted or Unused Pharmaceuticals

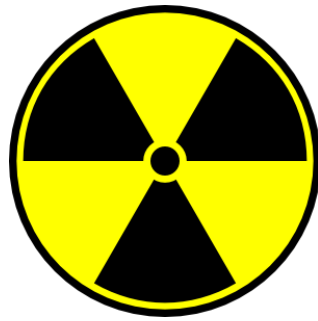
Disposal of unused or unwanted pharmaceuticals is an emerging and complex environmental issue. Waste pharmaceuticals include a wide variety of items, including over-the-counter and prescription medications. These wastes come in the form of solid pills and capsules, creams, liquids and aerosols.



Don't Flush!

The age-old advice of flushing pharmaceuticals down the toilet is now considered to be the least desirable of all alternatives. For many years many

Aurora, IL 60504-8132
 Mark package "For Disposal Only"



Code One / Firex / Kidde / Maple Chase Smoke
 Detector Products Call

Kidde Residential & Commercial Division
 1-800-880-6788

Thrift Stores

Blessingdales	358-6124
Catholic Charities	428-3458
DMH Swift Shop	428-8512
Hope's Attic	872-8842
LSA Resale Shop	423-0122
Masters Touch	429-0545
New To You	876-7305
Salvation Army	428-4513

Tin Cans
 (steel or tin cans)

Every day, Americans use 100 million steel cans. A year's worth of cans laid end to end would make 18 round trips to the moon. Steel can be recycled indefinitely. It takes 95% less energy to recycle a tin can compared to using new materials, reducing greenhouse gas emissions and decreasing environmental damage caused by mining.



Recycle trailer program
 Midwest Fiber Co. 424-9460
 Suburban 672-8483

Tires

Illinois disposal of tires in landfills has been prohibited since July 1, 1990. Tires are not permitted at landfills, due to their large volumes and 75% void space, which quickly consumes valuable space. Tires can trap



material while lumber makes up the majority of debris going to a local landfill.

Decatur Concrete Recycle*	2750 N. Jasper	875-4235
Decatur Wood Products**	800 East Garfield Ave.	424-2602
Old House Society	214 E. Douglas St. Bloomington	309-820-0548
PACA's Architectural Salvage Warehouse	44 E. Washington St. Champaign	309-359-7222
ReStore Habitat for Humanity	250 W. Cerro Gordo St.	425-6446
Sol Tick & Co.		429-4148
U.S. Scrap***		233-0090

*Concrete and asphalt
 **Clean dimensional lumber and wood pallets
 ***Ferrous and non-ferrous items

Business Recycling Services
 (Collection Containers, Transportation & Recycling)

Dove / RSVP*	422-3977
Midwest Fiber Co.	424-9460
Waste Management	428-4505

* PETE plastic #1



Cardboard

Midwest Fiber Co. 424-9460

Cell Phones

Barbeck Communications (all locations)	428-7000
Dove RSVP Recycling Center	422-3977
Maroa Lumber Company	794-2226
Midwest Fiber Co.	424-9460
Radio Shack	875-7334
RBRC	800-822-8837
Rexx Battery	422-0281



Staples 875-9951
 Target 875-6060

Many local schools and organizations collect cell phones to raise funds.

Clothing

Clothing and household reuse supports and contributes to an important need in our community. If a yard sale is not an option, please consider donating locally to one of the shops listed below. Additionally, the Salvation Army has placed convenient drop off boxes around the county.



Blessingdales 358-6124
 235 W. Eldorado St.
 Castaways* 875-4156
 985 W. Pershing Rd.
 Catholic Charities 428-3458
 DMH Thrift Shop
 553 W. Wood St. 428-8512
 Dove Children Clothing Closet*
 302 S. Union 429-9224
 Economy Shop
 967 N. Water 423-3003
 Hope's Attic
 2940 N MLK, JR. 872-8842
 Long Creek Town Hall*
 2610 Salem School Road 864-3212
 LSA Resale Shop
 201 W. Eldorado St. 423-0122
 Masters Touch
 1130 N. Main 429-0545
 New To You
 1985 E. Pershing 876-7305
 Salvation Army 428-4513
 Worn Again**
 4012 Fulton Ave. 429-1062

* children's clothing only
 ** consignment only

Macon County Environmental Management 425-4505
 Target 875-6060*
 Maroa Lumber Company* 794-2226
 Staples 875-9951
 Walgreens (all locations)* 429-1988

* printer cartridges only

Propane Cylinders

Ames Propane 864-2591
 6095 East Rt. 36
 HicksGas Decatur 428-4656
 2526 North Water Street

Records, Tapes, Discs & Video Games

BLH Computers-Decatur* 425-4040
 Game Stop
 1050 Hickory Point, Forsyth 875-9743
 4655 East Maryland St. 864-9777
 Salvation Army 428-4513



Other thrift stores may accept items.

*limits may apply

Smoke Detectors (manufacture program)

Both photoelectric and ionization smoke alarms contain plastic and electronic circuit boards and in some cases batteries (alkaline or lithium). Ionization technology also includes a chamber containing radioactive material incorporated into a gold matrix.



The amount of radioactive material in the smoke alarm at the end of its certified useful life will be about the same as when you bought it. (source USEPA) The best disposal option for smoke detectors is to return it to the manufacturer, if possible.

First Alert and BRK Brand Detectors
 First Alert, Inc.
 3920 Enterprise Court

- Buy recycled plastic products and plastics that can be recycled.
- Consider drinking filtered tap water as opposed to buying bottled water.

The Society of the Plastics Industry, Inc. (SPI) code was developed to meet recyclers' needs while providing manufacturers a consistent, uniform system. Because municipal recycling programs traditionally targeted packaging, primarily containers, the SPI coding system offered a means of identifying the resin content of bottles and containers commonly found in the residential waste stream. Recycling firms have varying standards for the plastics they accept. Some firms may require that plastics be sorted by type and separated from other recyclables, some may specify that mixed plastics are acceptable if they are separated from other recyclables, while others may accept all material mixed together.

To assist with recycling plastic containers look for these symbols listed below:



Plastic #1 PET
Soda/water bottles, milk jugs, detergent and cooking oil bottles, food jars.



Plastic #2 HDPE
Detergent bottles, milk/water/juice containers.



Plastic #3 PVC
Water bottles, shampoo and toiletry bottles..



Plastic #4 LDPE
Food containers, mustard containers and squeezable bottles.



Plastic #5 PP
Ketchup bottles, aerosol caps, yogurt containers.



Plastic #6 PS
Aspirin bottles.



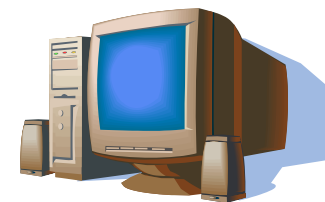
Plastic #7 Other
Multi-gallon water bottles, baby milk bottles.

Printer & Toner Cartridges

Best Buy
Cartridge World 875-2418
215 West Ash Ave. 875-0465



Computers / Electronics / Televisions



Every year, 3.2 million tons of electronic scrap or E-waste is disposed in our country. E-Waste is America's fastest-growing waste and contributes a percentage of toxic waste in landfills. Toxic chemicals include: lead oxide, mercury, nickel, zinc, cadmium, chromium, antimony, barium, beryllium and polyvinyl chloride.

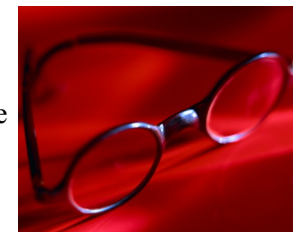
Illinois Public Act 095-0959 bans electronic waste from landfills and will go into effect 2012. Electronics from businesses are already banned from landfills.

Best Buy (hard drive must be removed)*	
1450 Koester Dr., Forsyth	875-2418
BLH Computer- Decatur **	
2350 E. Logan	425-4040
Staples *	
900 Commerce Place Dr.	875-9951

*Fee may apply
** Limit of 2 televisions per Day

Eye Glasses

As part of the Lions Club recycling project, 400,000 eyeglasses are recycled each year. To date more than 3 million pairs of recycled eyeglasses have been distributed by Lions around the world.



Lions Club International www.lionsclub.org
Maroa Lumber Company 794-2226
Midwest Fiber Co. 424-9460

or contact your eye care professional.

Fire Extinguishers

All Season Co.	
167 Excelsior School Road	519-0367
CC Fire Equipment Co. Inc.	
4377 Faries Parkway	423-5395



Fluorescent Light Bulbs (tube & CFL)

Residential fluorescent lamp & bulb recycling services are available for straight tubes, U-tubes & circular lamps. Please reuse packaging for storage and transportation of old bulbs. Please refer to mercury section for proper clean-up if bulb breaks. Businesses must follow the Comprehensive Environmental Response, Compensation, and Liability Act of 1980 (CERCLA) and cannot participate in residential collection programs



Kenny's Ace Hardware*	864-9214
Maroa Lumber Company	794-2226
Springfield Electric**	875-8000

*Daily limits apply (private individuals only non business bulbs accepted)
 ** Businesses only, fee will apply.

Gasoline

(see Household Hazardous Waste)

Glass (bottles/jars)

Glass containers are 100% recyclable. Recycling glass saves landfill space, and uses 40% less energy than manufacturing from new materials. Recycled glass reduces air pollution by 20% and water pollution by 50%.



Some curbside programs

CPR Enterprises Inc.	
4315 Turpin Road	429-2771

A container **next to** the Long Creek recycling trailer but not in the trailer.

Grocery Bags (plastic)

Bergner's	Staples
Cub Foods	Target
Kroger	Wal-Mart



- Use leftover paint before buying new paint.
- Donate unused paint to neighbors, friends, family or groups that can use it.
- Never pour paint down the drain, on the ground or in a storm sewer.
- Let latex paint dry completely before putting into a trash can.
- To accelerate drying add sawdust or high clay content kitty litter.

To avoid wasting paint use the free services offered by Paint Calculator websites which estimate how much paint it may take to cover wall space...indoors or outdoors.

www.allabouthome.com/calculators/paint.asp

www.bhg.com/home-improvement/remodeling/measuring-materials/paint-and-stain-calculator/

Pallets

Decatur Wood Products	424-2602
Midwest Fiber Co.	424-9460

Phone Books

Recycling trailer program	
Most curbside programs	
Midwest Fiber Co.	424-9460
Suburban Disposal	672-8483



Plastics (#1—#7)

Recycling trailer program	
Most curbside programs	
Midwest Fiber Co.	424-9460
Suburban Disposal	672-8483
Target	875-6060



Plastic is the most commonly used container used today, but only 27% are recycled. Recycling one ton of plastic conserves 4 barrels of oil. (Source American Chemistry Council) Since oil derivatives are utilized to produce plastic containers, increased plastic recycling directly affects our nation's oil consumption.

How Can You Help?

- Know which plastics (1—7) are accepted by recyclers.
- Wash and reuse a reusable drink container or personal glass container.

* daily limits apply
 ** transmission fluid only

Alternative recycling options for
 Cooking Oil, Hydraulic Fluid, Motor Oil, Transmission Fluid Recycling:

The Macon County Environmental Management Department has given several local communities grants to install heaters that burn used motor oil in their community buildings. If you have used motor oil, cooking oil, transmission or hydraulic oil, please contact the closest township for instructions. Hours of operation are limited and the oil must be dropped off. Farmers and private individuals can participate in the recycling effort, but businesses are not eligible. There is no cost and you will be helping our local communities.

Blue Mound Township	865-2911
Maroa	794-5230
Pleasant View Township	692-2753
South Macon Township	764-3022
Village of Blue Mound	692-2822

Packing Peanuts

Mail Boxes Etc. 303 E. Pershing Rd.	429-6245
--	----------

Paint

Almost 2 gallons of paint per person is sold each year. Unfortunately much of it ends up as liquid in landfills intended for solid waste, potentially contaminating soil, water and air.



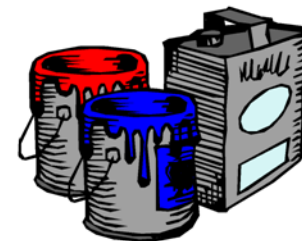
- Natural paints made from citrus and other botanicals are free of biocides and preservatives.
- Milk paints (casein paints) have health and eco-friendly properties.
- Latex paint is water-based and less toxic than oil paint (petroleum-based).
- Paint, if stored correctly (upside down with a tight seal around the lid), can last years.

Ways You Can Help?

- Consider buying latex paint (instead of oil based).

Household Hazardous Waste

For more information call Macon County Environmental Management Department at 425-4505. For potential Household Hazardous Waste dates and collections visit the Illinois EPA web site at



<http://www.epa.state.il.us/land/hazardous-waste/household-haz-waste/>

Junk Mail (consider shredding personal documents)

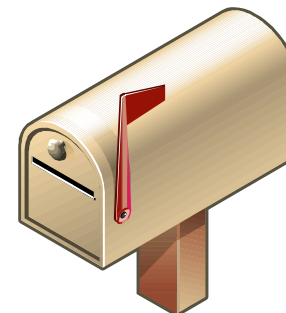
Recycling trailer program
 Midwest Fiber Co. 424-9460
 Suburban (curbside) 672-8483

Stop Junk Mail (\$1 fee):
 DMA Mail Preference Service
 PO Box 282, Carmel, NY 10512
www.DMAchoice.org

Stop Catalogs (free):
www.CatalogChoice.org

Stop Credit Card Offers (free):
 Equifax, TransUnion, Novus Credit, Experian
 1-888-567-8688 (1-888-5-OPTOUT)
www.OptOutPrescreen.com

Stop Shopping Flyers (free):
 Valpak Coupons 1-800-237-6266
www.coxtarget.com/mailexpression/s/DisplayMailSuppressionForm



Landscape Materials

Decatur Compost 3680 Bearsdale Rd.	428-1039
Macon County Compost Facility 3455 N. Bearsdale Rd.	424-1626

Magazines

Most curbside programs
 Recycling trailer program
 Midwest Fiber Co. 424-9460
 Suburban Disposal 672-8483



Mercury-Containing Products in the Home

Mercury may be used in: Thermostats, gauges, barometers, switches in children's light up sneakers and by hobbyists.



It is not uncommon for homeowners to use or acquire or find products containing liquid mercury in their homes. Thermostats made after July 1, 2007 (Public Act 093-0964) do not contain mercury. Broken products containing mercury can become a source for exposure that could pose personal risk.

In order to protect health and the environment, safe and proper disposal of mercury is vital! Mercury-containing products have no alternative disposal options and must be saved for a household hazardous waste collection. To minimize potential hazards, keep mercury-containing products in an airtight, leak-proof container. Until material is delivered to a collection, keep the container stored out of reach of children and away from any potential breakage. Kitty litter or oil absorbent should be placed around the product to protect it from breaking or sudden shocks. Clearly label storage container as "Mercury-DO NOT OPEN."

What To Do If You Have a Mercury Spill

All mercury spills, regardless of quantity, should be treated seriously. If you have a broken mercury containing device (thermometers, CFLs, etc.) or an elemental mercury spill in your home, contact the Macon County Environmental Management Department at (217) 425-4505 or the Mercury Hotline at (888) 522-1282.

Compact Fluorescent Lamps (CFLs) contain a small amount of mercury. A release of mercury may occur if the glass portion of the CFL is broken. Following proper procedures when containing and cleaning up the mercury will minimize any exposure risk.

- Do not use a vacuum cleaner to clean up the breakage. This will spread the mercury vapor and dust throughout the area and could potentially contaminate the vacuum.
- Keep people and pets away from the breakage area until the cleanup is complete.
- Ventilate the area by opening windows, and leave the area for 15 minutes before returning to begin the cleanup to allow mercury vapor to dissipate.
- For maximum protection, wear rubber gloves to protect your hands from the sharp glass.

- Next, begin collecting the smaller pieces and dust. You can use two stiff pieces of paper such as index cards or playing cards to scoop up pieces. Carefully remove the larger pieces and place them in a secure closed container, preferably a glass container.
- Pat the area with the sticky side of duct tape, packing tape or masking tape to pick up fine particles. Wipe the area with a wet wipe or damp paper towel to pick up finer particles.
- Put all waste and materials into the glass container, including all material used in the cleanup that may have been contaminated with mercury. Label the container as "broken lamp."
- Wash your hands and face.
- Continue ventilating the room for several hours.
- Remove the container with the breakage and cleanup materials from your home. Take the glass container to a facility that accepts household hazardous waste or place in trash. Do not take a broken CFL to a retail collection facility.
- When a break happens on carpeting, homeowners may consider removing throw rugs or the area of carpet where the breakage occurred as a precaution, particularly if the rug is in an area frequented by infants, small children or pregnant women.

Metals

Midwest Fiber Co. *	424-9460
Sol Tick & Co.**	429-4148
U.S. Scrap***	233-0090

* non-ferrous (aluminum, brass, bronze, copper)

** ferrous & non-ferrous

***ferrous (iron, steel)

Newspaper & Office Paper



Recycling trailer program

Most curbside programs

Midwest Fiber Co.

Suburban Disposal

424-9460

672-8483

Oils & Lubricants (motor oil / transmission)*

Advance Auto Parts	423-9181
Auto Zone (all locations)	876-8317
Greg's Automotive Specialist (MT. Zion)	864-4400
Nicks Auto Body**	423-0808
O'Reilly Auto Parts (all locations)	428-1340
Speed Lube (all locations)	429-9508

